

Re-define and Re- imagine to Create Equity and Equality

More About Me:

- Social Impact Architect
- Undercover Attorney
- Legal, Design, Strategy
- Community Centered Clients
- Nature and Culture-informed



But First, Expectations.

- Invest in yourself, turn off distractions
 - Check defensiveness
 - Discomfort indicates change



Quick Story...

There's a social impact architect and a museum...



As Without, So Within



There is an externalization of racial
injustice, but each of us carry vestiges
of oppression

So the question isn't
how do **OTHERS**
perpetuate systems of
injustice, but how do I?



Don't Revise, Redefine

We are always designing, consciously or not.

Just as we are always having an impact.

My focus isn't on
revising and
twisting what
wasn't built from
the beginning.

It's to re-construct
collectively and
inclusively.



Redefining Philanthropy

Move away from "serving communities" to "co-producing with communities."

Decentralize tools, expertise, capital, assets into the community. Letting the community decide its challenges, solutions, and implementation.

Examples:

- *The Heron Foundation*
- *Unconscious bias work by Raikes Foundation*
- *Fund for Democratic Communities*

Re-Defining Capital and Investment

Look at the various forms of capital, and decentralizing investment to meet communities where they are using open-source tools.

Does my system and process look similar to traditional system and process, with the twist of an impact filter? Remove investment barriers and address power dynamics

Examples:

- *Co-op Capital*
- *REAL People's fund and the Runway Project*
- *Main Street Phoenix Project*
- *Black Girls Ventures*
- *Self-Help Credit Union*

How Rich are You in These Eight Forms of Currency?

By Kris Taylor

<https://evergreenleadership.com/2016/08/26/eight-forms-of-currency/>

Form of Capital	• Its Currency and Manifestations
Social	•Connections: influence & relationships
Material	•Materials and "natural resources":tools, buildings, infrastructure.
Financial	•Money: financial instruments & securities
Living	•Carbon, Nitrogen, Water: soil, living organisms, land, ecosystems
Intellectual	•Ideas, Knowledge: words, images, "intellectual property"
Experiential	•Action: embodied experience, wisdom
Spiritual	•Prayer, Intention, Faith, Karma: spiritual attainment
Cultural	•Song, story, ritual: community

Re-defining Asset

Look at all assets versus equipment and money alone.

Expertise, access, platform, and connections are all assets as well.

Re-define knowledge; the true experts are the community.

Examples:

- *Solutions Journalism*
- *Fold.it Beta*
- *Fifth Ward Cultural Arts District*
- *Time banks*

Doing Differently: Questions to Ask

Do I question existing processes and systems?

What is the purpose of "X"?

Is this built for, and by, the community?

Who are we not involving at an integral and fundamental level?

Who does the current system and process serve?

How might I be protecting myself, my benefit, my ego or my privilege?



Where does equity lie? Who owns what?





Do I prioritize imagination as a form of innovation? When is the last time I reimagined how things could be?

**Does my spending
support heavily
subsidized and
extractive means? Or
local and regenerative?**





Am I watching for my unconscious
biases?

Experimentation

Process for experimenting

Creating an Experimental Culture

Re-training our experimentation muscles takes time and practice. I like to see it as a part of the natural cycle.

My process for engaging experimentation requires I:



Prep the Soil



Plant and Seed



Grow and Maintain



Harvest and Rest

Translating ideas into life-changing projects.
www.emclartypllc.com

erin
McClarty PLLC

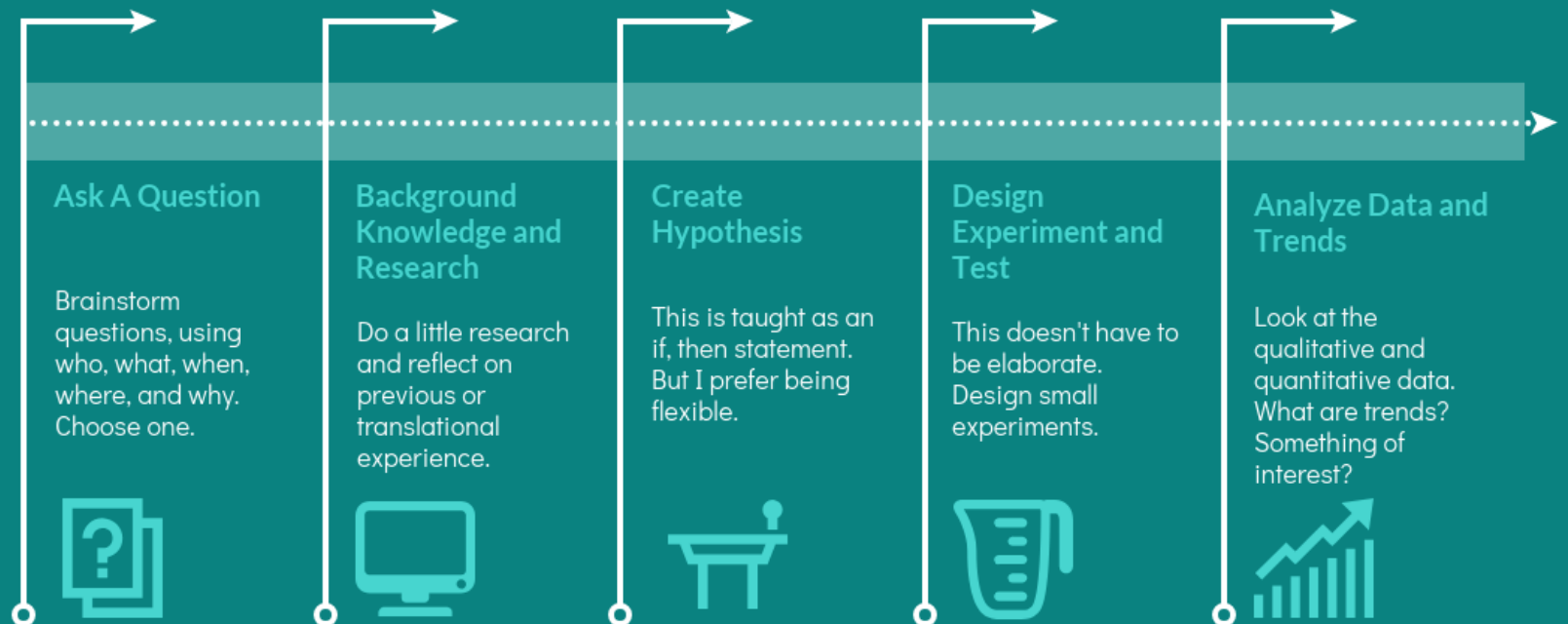
Scientific Method

Remember Your Fifth Grade Self



In this time of uncertainty, the last thing we should do is push ourselves for answers. Instead, try channeling the fifth grade you and using the scientific method.

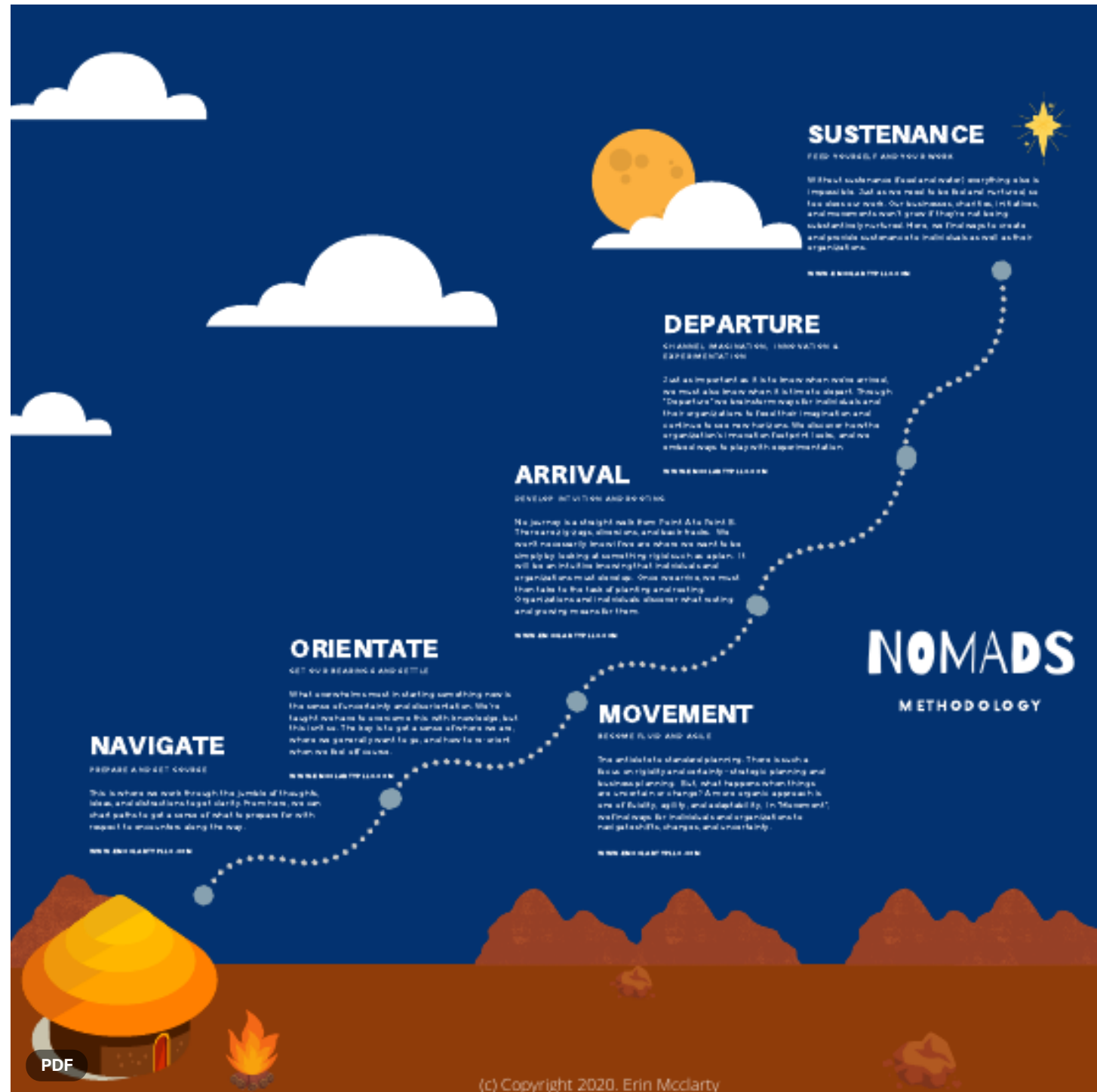
Don't remember what that was? Here is a reminder.



Translating ideas into life-changing projects.

www.emclartypllc.com

Nomads Methodology



PDF

(c) Copyright 2020, Erin McClarty

"If we're not doing the internal work, then it's putting on a show and not furthering a cause."

**These are big concepts,
don't worry if it takes a
little time to marinate.**

Questions?

Contact:

emccclartypllc.com

832-305-6417

ērin
McClarty PLLC.